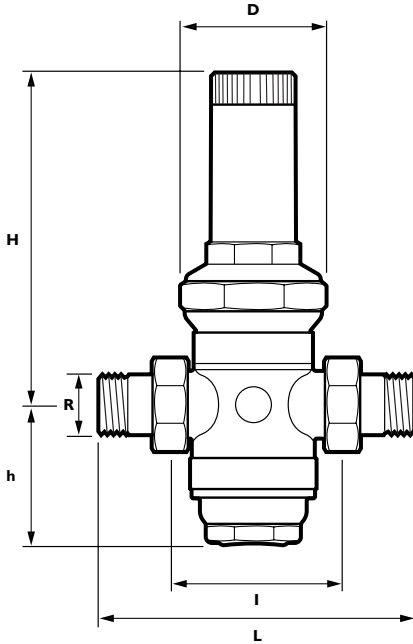
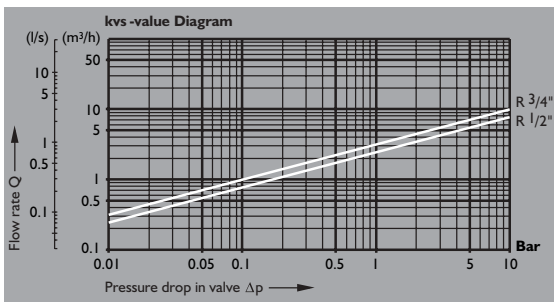


PRV05LP low pressure range



Connection size	R	1/2"	3/4"
Nominal size	DN	15	20
Weight approx.	(kg)	1.4	1.6
Dimensions	(mm)		
	L	140	160
	I	80	90
	H	148	148
	h	56	56
	D	73	73
kvs-value		2.4	3.1



Data

Maximum pressure	– 16.Bar
Outlet control pressure	– 0.5–2 Bar
Factory Setting	– 4 Bar
Minimum pressure drop	– 0.5 Bar
Max. operating temperature	– 70°C
Medium	– Water and other non-aggressive liquids.

Compressed air and nitrogen

Product	Kvs	Connections
PRV05LP	9.1	1/2" BSP(M)
PRV05LP	12.6	3/4" BSP(M)
Pressure gauge (Not Included)		1/4" BSP(M)

Materials

Body	– Dezincification resistant brass
Cover	– High quality synthetic material
Diaphragm	– Fibre reinforced NBR
Valve Insert	– High quality synthetic material
Seals	– NBR
Strainer	– Stainless steel
Filter Bowl	– Dezincification resistant brass

WFBS Listed

Code numbers

855915 - 1/2" BSP PRV05LP pressure reducing valve.
 855920 - 3/4" BSP PRV05LP pressure reducing valve.
 811000 - 1/4" BSP pressure gauge.

Application

PRV05LP can be used for domestic, industrial or commercial applications and protects water installations from excessive pressures from the water supply. The PRV05LP range offers a high quality solution where the set pressure is maintained even where there is a wide inlet pressure fluctuation. Installing PRV's will prevent pressurisation damage, reduce water consumption and minimise flow noise. It is recommended that a Douglas Keysafe isolating ball valve strainer protects the PRV.

Special features include

- Simple outlet pressure adjustment by grey control cap.
- Set pressure is directly indicated on the set point scale.
- Inlet pressure balanced - no influence on outlet pressure.
- Integral fine filter (0.16 mesh) and brass filter bowl.
- Simple servicing and maintenance without removal from pipework.
- Low maintenance - adjustment spring is not in contact with the potable water
- Low maintenance - replaceable valve insert

How to specify

Douglas 1/2" PRV05LP pressure reducing valve control range – 0.5 to 2.0 Bar. Code no. 855915
 Douglas 3/4" PRV05LP pressure reducing valve control range – 0.5 to 2.0 Bar. Code no. 855920
 1/4" BSP pressure gauge. Code no. 811000